

Logging Operations in Hisar Production Division

Ringside View of Hisar P div

- Became operational in 1978
- Current division Hq is at Hisar
- Covers felling in Mohindergarh, Sirsa, Fatehabad and Bhiwani Territorial Forest Divisions
- Fellings exclusively on notified forest areas
- The total geographical area of Hisar production division is around 14000 sq. km, more than 2-4 times of other production divisions taken individually and still remaining more than all the other production divisions taken together.
- Has four ranges viz Hisar, Fatehabad, Bhiwani and Sirsa

Annual Plan 2009-10

(as approved by CF P Karnal)

- Physical targets: *min* 15000 cu m
- Revenue Target: 425 lakhs
- Expd. Targets: (allotment so far)
 - Total Dir and Administration: 141.20 Lakhs
 - Salaries (pay +DA): 138 lakhs
 - Wages: 0.50 lakhs
 - TE: 0.60 lakhs
 - OE: 0.75 lakhs
 - POL: 0.60 lakhs
 - RRT: 0.75 lakhs
 - Total Works: Rs. 76.25 lakhs
 - Minor (logging) works: 75 lakhs
 - Building: 0.25 lakhs
 - Equipment: 0.50 lakhs
 - Advt: 0.25 lakhs
 - Misc: 0.25 lakhs

Volumes recd so far

Vol given As per marking lists Recd in 2009-10
(Till Sept 30,2009)

Div	Gr (Emer)	DD	Total
Bhiwani	0	0	0
Fatehabad	145	2350	2495
Sirsa	131	0	131
Total	276	2350	2626
M'garh	452	0	452
G. total	728	2350	3078

Tentative Availability of DD Volumes

Sirsa: ~ 60000 cu m ~ 75000 trees

Bhiwani: ~ 25000 cu m ~ 31250 trees

Fatehabad: ~ 15000 cu m ~ 18750 trees

Total in West Circle: 100000 cu m ~ 125000 trees

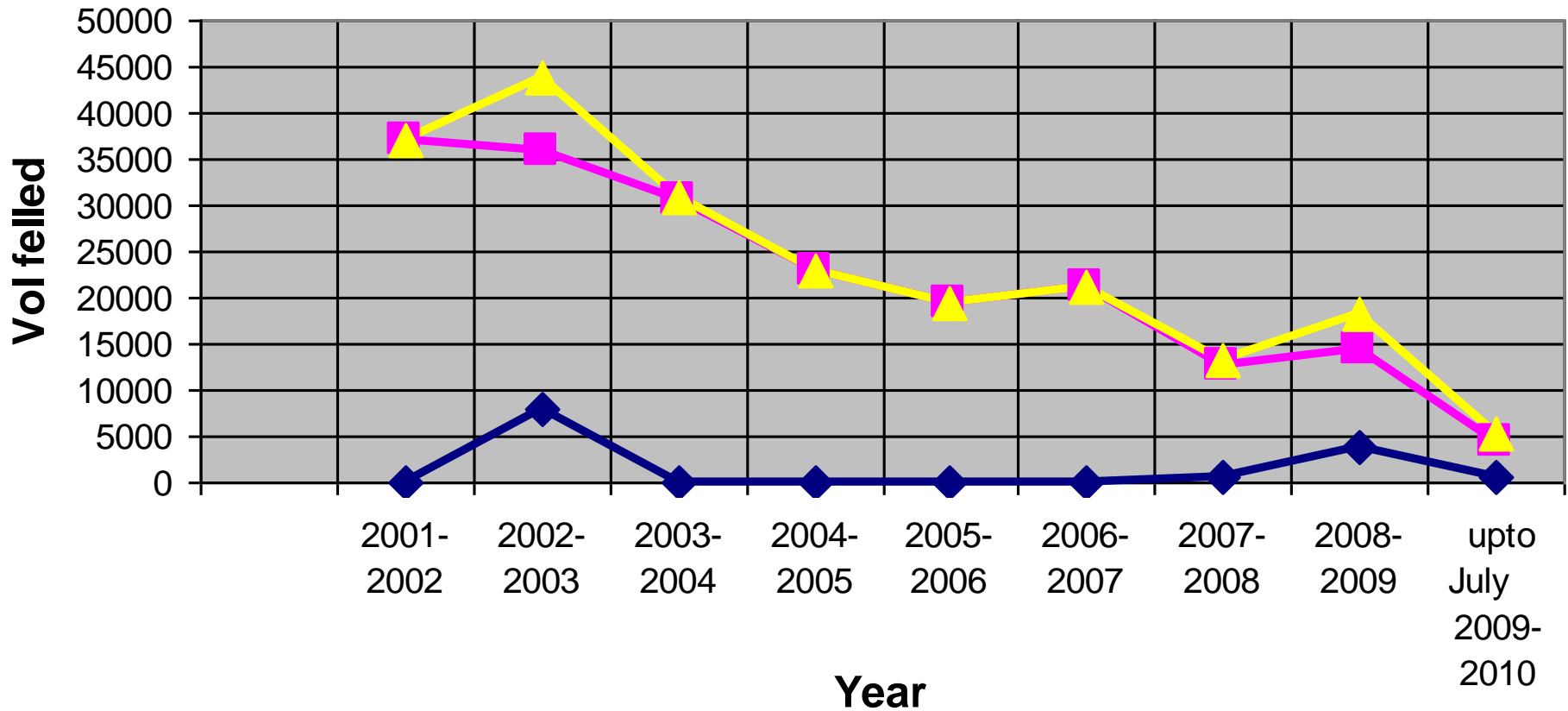
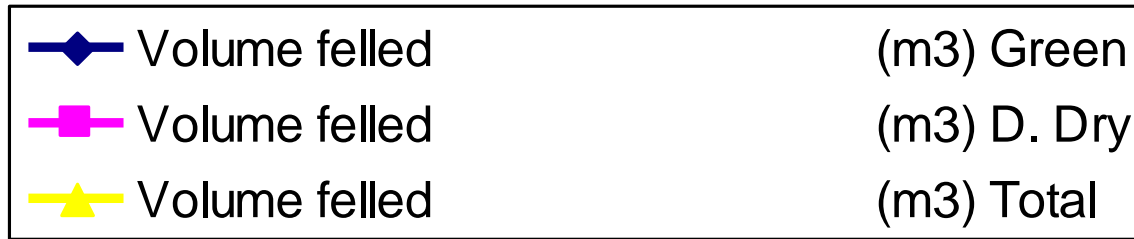
Mohindergarh: ~ 10000 cu m ~ 12500 trees

This is sufficient for 3 year felling Cycle of Hisar P div and there is no need whatsoever for Green Annual Felling Programs in Working plans.

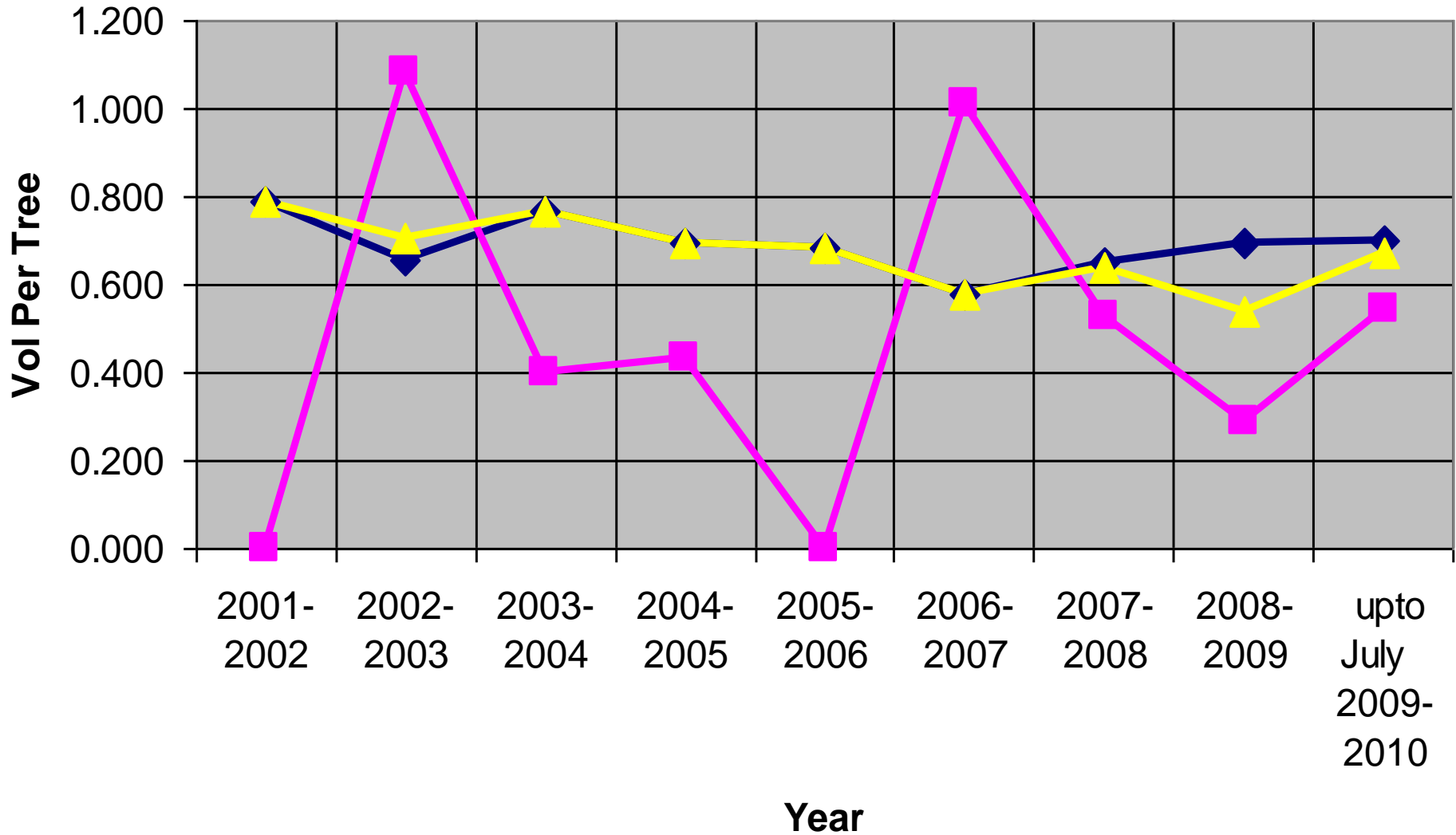
Targets Achieved So far (upto 30.9.2009)

- Volume Felled : 6584 cu m {1173 Green (18%)+ 5411 DD(82%)}
- Vol on hand: 1677 cu m {331 Green(20%)and 1346 DD(80%)}
- Works Expd so far: Rs. 38.09 lakhs(50%)
- Estt Expd: Rs. 73.34 lakhs(52%)
- **Rev achieved: Rs. 348.07 lakhs(82%)**

Vol felled Dead and Green wise



Vol per tre felled



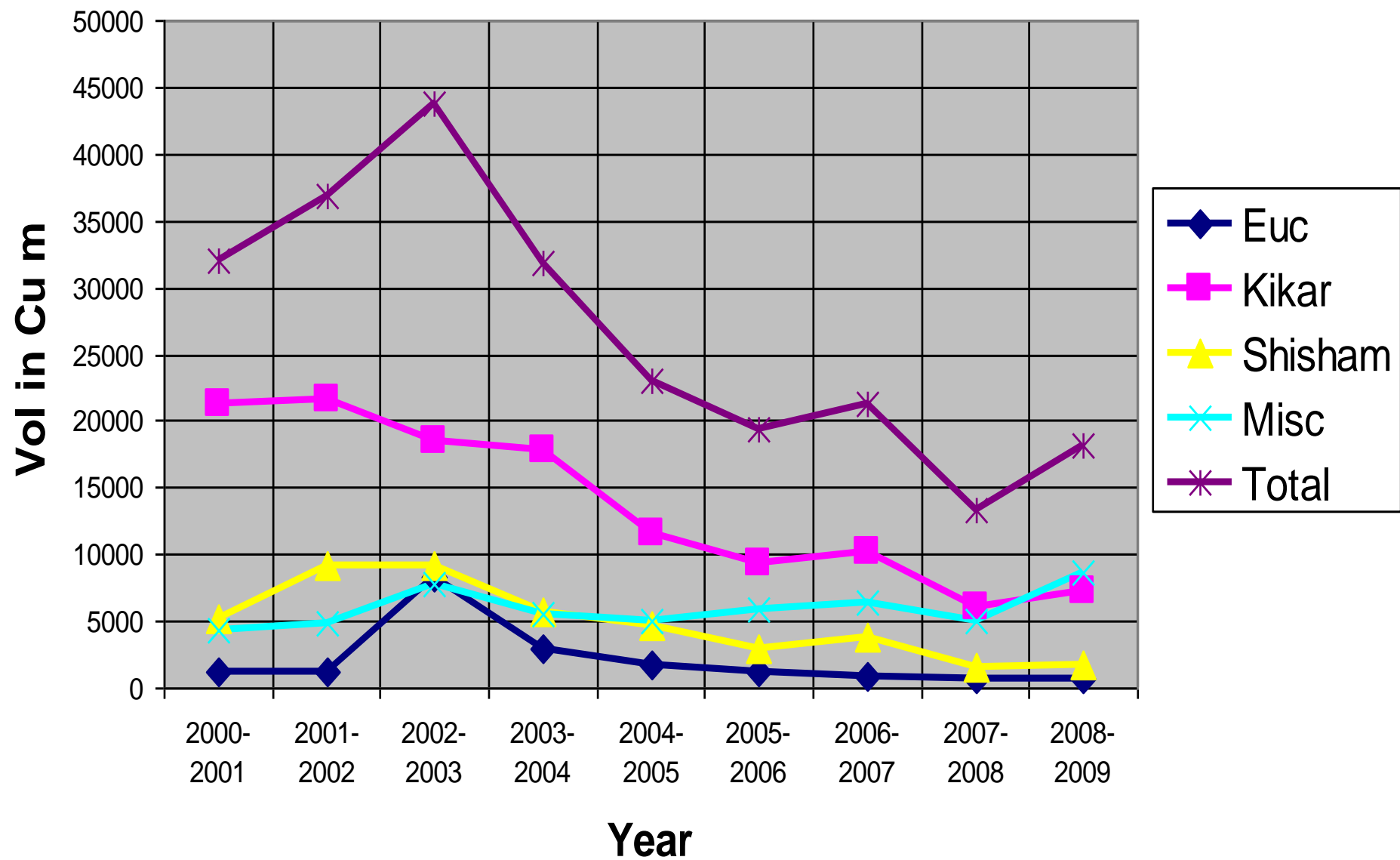
Felling Details Since 2000 till Sept 2009

Year	Volume Felled	Timber Vol	G I	G II	Stumps	Solid Conversion	solid con %
2000-2001	32039	16477	5979	538	2106	20752	64.77
2001-2002	36923	19740	5456	83	2412	23642	64.03
2002-2003	43767	22037	5677	1445	2216	26431	60.39
2003-2004	31902	14832	1892	280	2160	16591	52.01
2004-2005	23087	10944	1690	7	2010	12463	53.98
2005-2006	19451	8156	850	0	1673	9084	46.70
2006-2007	21250	11859	965	4	2505	13065	61.48
2007-2008	13316	7344	1010	100	3329	8812	66.18
2008-2009	18125	9650	2133	641	3747	12059	66.53
2009-2010	6584	3444	712	115	1746	4342	65.95

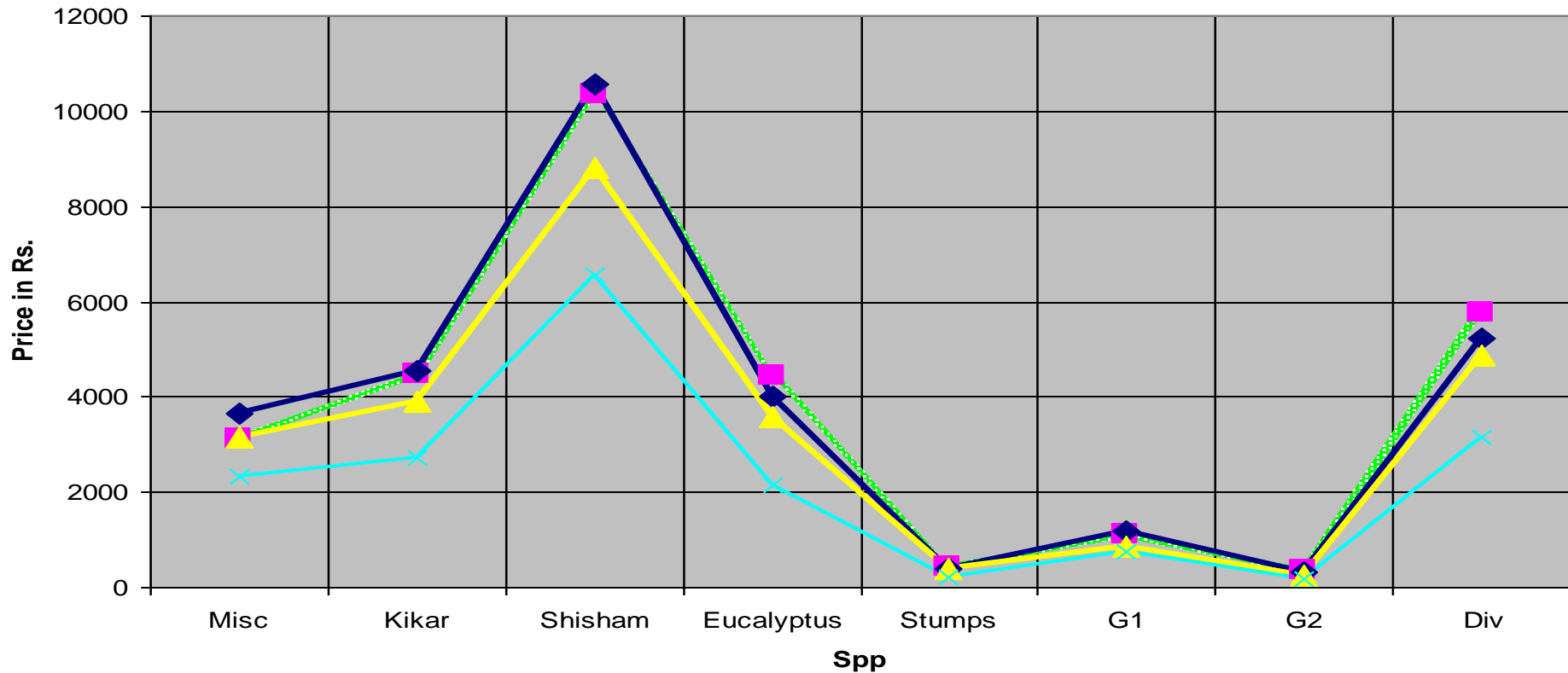
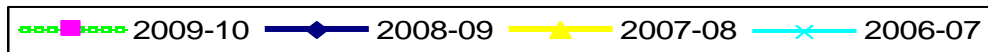
Expd and Rev Stats of Hisar P Div since 2000 till Sept 2009

Year	Std. Vol	Works Expd(la khs)	Estt. Expd(la khs)	Revenu e (Lakhs)	Per cubic Metre Standing		
	Felled				Works	Estt	Rev
2000-2001	32039	92.54	41.24	366.74	288.83	128.73	1144.67
2001-2002	36923	107.73	154.42	530.32	291.77	418.22	1436.28
2002-2003	43767	116.75	50.8	473.38	266.75	116.07	1081.59
2003-2004	31902	86.67	69.97	480.41	271.68	219.33	1505.89
2004-2005	23087	66.78	61.34	251.46	289.25	265.69	1089.18
2005-2006	19451	62.52	76.69	251.58	321.42	394.27	1293.40
2006-2007	21250	98.19	81.69	367.13	462.07	384.42	1727.67
2007-2008	13316	81.13	92.59	453.26	609.25	695.33	3403.91
2008-2009	18125	104.32	145.50	440.43	575.57	802.77	2429.97
2009-2010	6584	38.09	73.34	348.06	578.50	1114	5286

Specieswise Vol felled in Hisar p Div

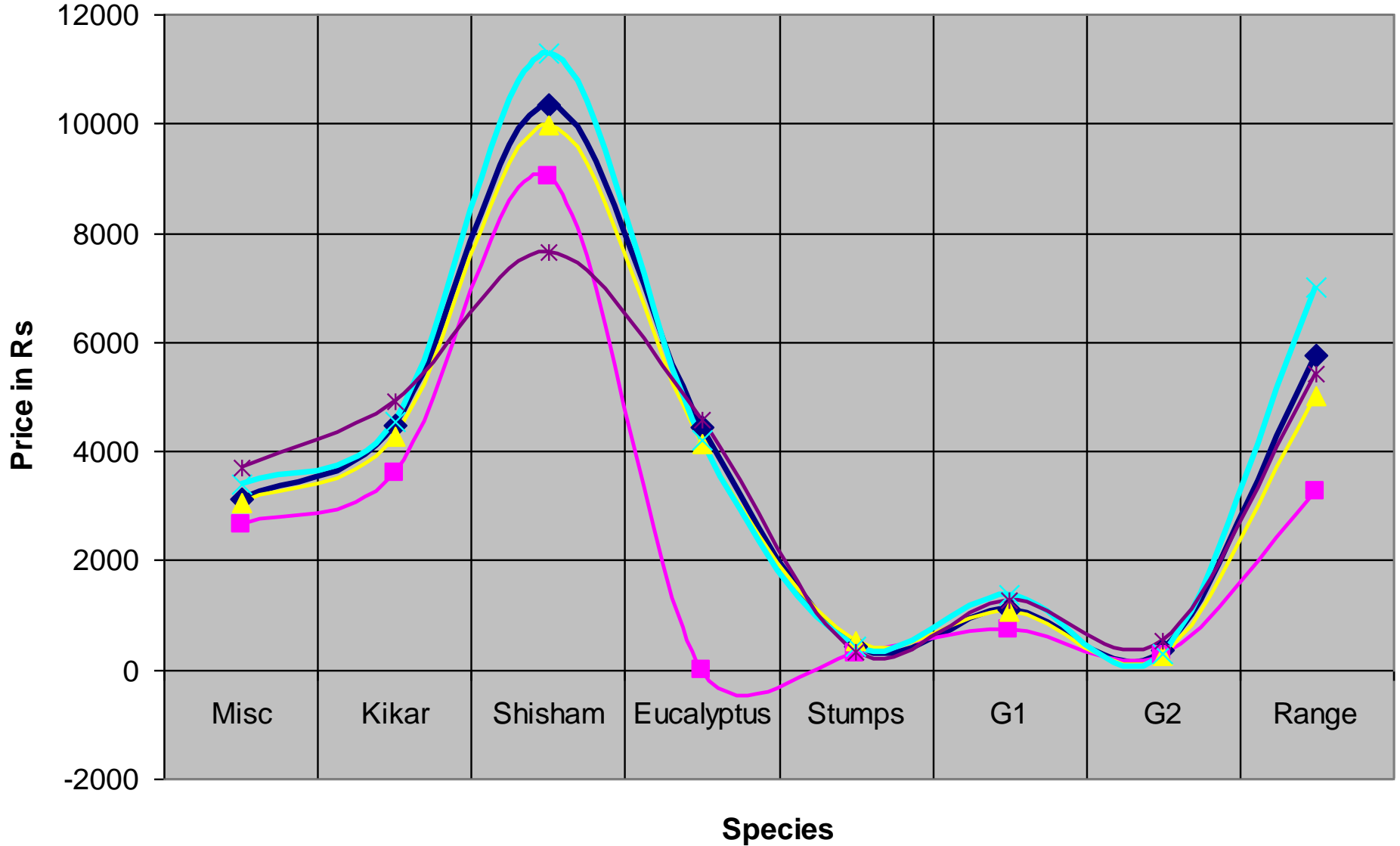
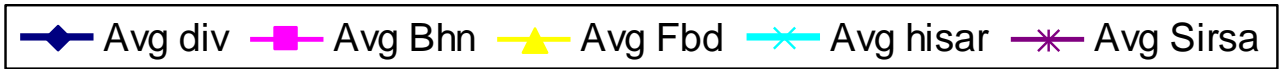


Sp and yearwise price trends



Year	Misc	Kikar	Shisham	Eucalyptus	Stumps	G1	G2	Div
2009-10	3113	4469	10357	4427	426	1116	358	5771
2008-09	3665	4555	10583	4022	391	1191	325	5230
2007-08	3155	3903	8820	3577	389	850	234	4875
2006-07	2317	2709	6550	2138	228	760	187	3151

Avg sale price Trends Rangewise



Performance of Hisar Production Division in the Year 2009-10										
District	Month	Misc	Kikar	Shisham	Eucalyptus	Stumps	G1	G2	Total	Range
Bhiwani	Total sale	573829	183651	35548	0	6000	64745	16000	879773	Bhiwani
F'bad	Amounts	815418.24	860401.2	973949.9	204640.75	161995	65150	1000	3082555	F'bad
Hisar		375560.4	2261587	4053039	432251.3	278682	116970	900	7518989	Hisar
Sirsa		480745.85	509833.7	816383.6	1156192.5	102225	135900	22040	3223321	Sirsa
Total		2245553.49	3815473	5878920	1793084.6	548902	382765	39940	14704638	
District	Month	Misc	Kikar	Shisham	Eucalyptus	Stumps	G1	G2	Total RT	Range
Bhiwani	Qty Sold	215	51	4	0	20	89	64	270	Bhiwani
F'bad		266	201	98	50	315	61	4	614	F'bad
Hisar		111	498	359	103	631	86	3	1071	Hisar
Sirsa		130	104	107	253	321	108	41	593	Sirsa
Total		721	854	568	405	1287	343	112	2548	
District	Month	Misc	Kikar	Shisham	Eucalyptus	Stumps	G1	G2	Total	Range
Bhiwani	Rate/c.m.	2669	3584	9041	0	300	727	250	3257	Bhiwani
F'bad		3066	4282	9964	4123	514	1077	250	5018	F'bad
Hisar		3391	4543	11283	4208	442	1360	300	7024	Hisar
Sirsa		3709	4910	7650	4575	318	1264	544	5437	Sirsa
Total		3113	4469	10357	4427	426	1116	358	5771	

Annual Fellings During The Entire working Plan

Backlog Status: M'garh Forest division

Total Vol Felled During W P period:29348 cu m

Year	Due as per WP	Felled	Balance
1999-00	4864	4277	587
2000-01	4975	1223	3752
2001-02	5127	923	4204
2002-03	4898	5366	-468
2003-04	4957	5991	-1034
2004-05	1985	1482	503
2005-06	1437	1265	172
2006-07	1030	3218	-2188
2007-08	1884	1050	834
2008-09	1660	4553	-2893
2009-10	0	280	0
Backlog			3469

Annual Fellings During The Entire working Plan

Bhiwani Territorial Division					
W. Plan	Volumes Felled by		Total	Pres.	Backlog
Years	Production	HFDC	Vol. felled	Vol.	Vol
1999-2000	11787	1309	13096	9709	-3387
2000-2001	4416	2717	7133	8591	1458
2001-02	3786	3766	7552	8868	1316
2002-03	6552	2989	9541	8567	-974
2003-04	5226	2131	7357	9134	1777
2004-05	4871	1024	5895	8546	2651
2005-06	3442	1040	4482	8328	3846
2006-07	3644	4476	8120	8310	190
2007-08	5732	540	6272	9376	3104
2008-09	7572	0	7572	7018	-554
2009-10*	1537	0	1537	0	-1537
Total Vol Felled in W P Period: 77020				Backlog: 9427 cu m	

**Annual Fellings During The Entire working Plan
Sirsa Territorial Division**

W. Plan Years	Volumes Felled by		Total	Pres.	Backlog
	Production	HFDC	Vol. felled	Vol.	Vol
1999-2000	13521	0	13521	15056	1535
2000-2001	14509	0	14509	10816	-3693
2001-02	23626	0	23626	18825	-4801
2002-03	31587	0	31587	14032	-17555
2003-04	18048	0	18048	9463	-8585
2004-05	7647	0	7647	11716	4069
2005-06	8220	0	8220	9356	1136
2006-07	10511	0	10511	15372	4861
2007-08	926	0	926	11537	10611
2008-09	174	0	174	10513	10339
2009-10*	1218	0	1218	0	-1218
T Vol felled in W P Period: 128769 cu m				Backlog	-3301

Annual Fellings During The Entire working Plan Fatehabad Territorial Division

W. Plan Years	Volumes Felled by		Total	Pres.	Backlog
	Production	HFDC	Vol. felled	Vol.	Vol
2000-2001*	0	0	0	0	0
2001-02*	0	0	0	0	0
2002-03*	0	0	0	0	0
2003-04*	0	0	0	0	0
2004-05	10569	0	10569	7743	-2826
2005-06	7749	0	7749	11943	4194
2006-07	7095	0	7095	8602	1507
2007-08	5608	0	5608	6144	536
2008-09	5826	0	5826	6111	285
2009-10	3464	0	3464	3200	-264

Prescribed volume + Backlog

3432

* Fbd T div was a part of Hisar T division

Marking lists/Vol Recd in year 2009-10

Mohindergarh : 2009-10							
Lot No.	DCF (M'garh) Letter No./Date	Type of Felling	Trees	Volume	Marking List	Green / D.Dry	Range
1-5	402/19.6.09	Emergency	630	451.37	Yes	Green	Narnaul:
2m	4054/25.8.09	Emergency	7	1.01	Yes	Green	M,garh:452.38
			637	452.38			
Total			630	451.37	0	0	0
Bhiwani : 2009-10				Vol. Recd			Vol fell
Lot No.	DCF (BHN) Letter No./Date	Type of Felling	Trees	Volume	Marking List	Green / D.Dry	
							Bh:
		NIL					Dad:
							Tos:
							Badh:
							Loh:
							Siw:
Total			0	0			

Fatehabad : 2009-10				Vol. Recd			Vol fell
Lot No.	DCF (FBD) Letter No./Date	Type of Felling	Trees	Volume	Marki ng List	Green / D.Dry	Range
1	36/10.4.09	DD	7	11.32	Recd	DD	Fbd:1290
2-32	141/1.5.09	DD	1663	1398.75	Recd	DD	Toh:1205
33	547/24.6.09	Emergency	4	6.22	Recd	Green	
34-36	544/24.6.09	Emergency	63	69.39	Recd	Green	
1-2	3808/28.8.2009	Emergency	89	69.29	Recd	Green	
3-29	4040/2.9.2009	DD	1246	939.68	Recd	DD	
Total			3072	2495	3200		
Sirsa :2009-10				Vol. Recd			Vol fell
Lot No.	DCF (SRS) Letter No./Date	Type of Felling	Trees	Volume	Marki ng List	Green / D.Dry	
1-16	483/29.6.09	Emergency	126	130.9	Yes	Green	Sirsa:
							Dab:23.56
							Rania:99.28
							Kalanwali:8. 06
Total			126	130.9			
G. Total of Division		Avg Vol Per Tree: 0.80 cu m	3835	3078			

Thank you