




An introduction to JICA Forestry Project of Haryana

A presentation by Haryana Forest Department

C.R. JOTRIWAL, IES

Project Director, JICA

Haryana.



Project Title
Integrated Natural Resource
Management and Poverty Reduction
Project in Haryana
(ID-P 158)

Main Points of the Project

Japan International Cooperation Agency-JICA has financed a seven year project 'Integrated Natural Resource Management & Poverty Reduction in Haryana.

Project started in 2004 and ends during 2011, first year was preparatory and last two years are for consolidation and maintenance of assets created in the project.

Total project out-lay is Rs. 2860.12 million Rupees; state share is Rs. 516.71(18%) JICA share is Rs. 2343.41(82%)

Forest development and poverty reduction are two pivotal concerns of the project.

Villages where work is proposed

Work is proposed in 800 villages of 17 districts during the project.

Every year 200 villages are to be taken;



Village Selection Criteria

1. Availability of land for Planting

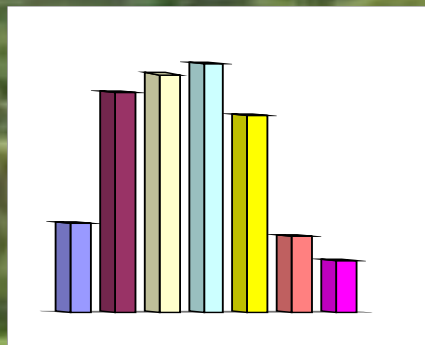
(Strip forest 10 Rkm. or block forest 20 ha or Panchayat land 20 ha)

2. Minimum Eight percent of BPL families

3. Minimum Fifteen percent SC population

Annual Work Plans

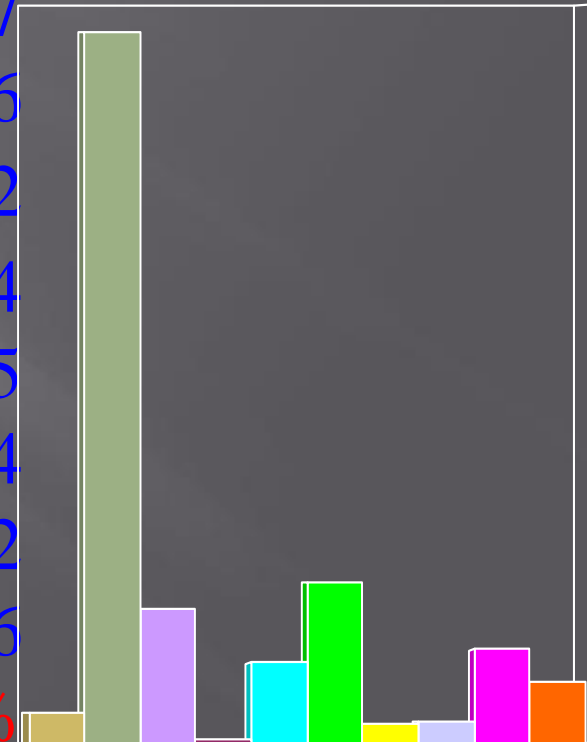
Project components are distributed in convenient annual parts called Annual Work Plans (AWPs)



	Amount (Rs M)	%
2004-05	150.421	5.39
2005-06	484.961	16.96
2006-07	577.415	20.19
2007-08	654.392	22.88
2008-09	503.160	17.59
2009-10	195.271	6.82
2010-11	132.710	4.64
Total	2860.12	100%

Project Components:

Component	Amount (Rs. M)	%
1 (a) Soil & water Cons	67.02	2.34
1 (b) Plantation Models	1538.53	53.79
2 Poverty Reduction	290.80	10.17
3 Technical Assistance	10.31	0.36
4 Supporting Activities	175.10	6.12
5 Staff	350.00	12.24
6 Office expenses	41.50	1.45
7 Vehicles Machinery	47.00	1.64
8 Escalation @ 2.2%	203.66	7.12
9 Contingency @ 5%	136.20	4.76
Total	2860.12	100%



Progress Soil & Water Conservation Works (upto March. 2009)

Component	Unit	Target	Achievement
Drystone Check Dams	m3	18,000	19,000
Crate-wise Structure	m3	16,000	10,754
Water Harvesting Structure	No	10	10
Rehabilitation of Water Harvesting Structures	No	30	28
Rehabilitation of Village Ponds	No	60	40

Progress Plantation Models (upto March. 2009)

Strip Forests	Unit	Target	Achievement
1. Planting of Tall Plants	RKM	8,000	8,922
2. Ridge Plantation	RKM	20,000	22,945
3. Mix Plantation of med plants	Ha	2,000	2,041
4. Rehabilitation of Degraded Forest	Ha	4,000	4,044
5. Protection of Strip Plantation	RKM	10,000	*4,726
6. Farm Forestry	Ha	13,800	5,819
* Detail & APO not provided by CF (North) and CF (West)			

Progress Planting Models (upto March, 2009)

Component	Unit	Target	Achievement
Block Forest Plantation			
1. Rehabilitation of Degraded Forest	Ha	7,500	7,755
2. Alkali Land Plantation	Ha	1,500	1,194
3. Mix Plantation of Medicinal Plants	Ha	2,000	2,108
Community Land Plantation			
1. Mix Plantation of Medicinal Plants	Ha	2,000	2,472
2. Silvi- Pasture	Ha	2,000	1,151
3. Alkali Land Plantation	Ha	(0)260	230
Development of Modern Nursery	No.	70	68

Achievements under Poverty Reduction Component (upto September, 2009)

Component	Unit	Target	Achievement
Selection of Villages -PRA	No.	800	800
VFCs Formed	No.	800	800
Micro plan Prepared	No.	800	800
Entry Point Activities	No.	800	691

BALANCE EPA

Name of Division	EPA not Done in
Rewari	8
Ambala	13
Rohtak	3
Jhajjar	20
Sonipat	9
Panipat	10
Karnal	11
Sirsa	1
Bhiwani	15
Hisar	19
Total	109

Progress on self help groups (upto June, 2009)

Component	Unit	Target	Achievement
Number of Project Villages	No.	800	800
Villages covered under SHGs	No.	800	788
SHGs Formed	No.	2400	1832
SHGs doing Micro Saving	No.	2400	1695
SHGs running Micro Enterprises (IGAs)	No.	2400	1142

Financial Achievement (Rs. M) (upto June 2009)

Component	Target	Achievement	During 2009-10	Balance
1. Soil & Water Conservation	67.02	68.10	1.69	-2.77
2. Plantation	1538.50	1634.16	18.26	-113.92
3. Poverty Reduction	290.80	272.44	0.43	17.93
4. Technical Assistance	10.30	14.78	1.24	-5.72
5. Supporting Activities	175.10	144.18	3.68	27.24
6. Staff , OE, Machinery	438.50	288.58	2.31	147.61
7. Price Escalation (2.2%)	203.70	16.38	-	187.32
8. Contingency (5%)	136.20	0.99	-	135.21
Total	2860.00	2439.61	27.61	392.90

Annual Plan Proposal 2009-10

Component	Financial Target Rs in lakh	Financial Target Rs in lakh
1. Soil & Water Conservation	300	16.94
2. Plantation	1250	182.59
3. Poverty Reduction	20	4.26
4. Technical Assistance	100	12.37
5. Supporting Activities	178	36.78
6. Staff , OE, Machinery	900	23.07
7. Unspent Balance 2008-9	500	-
Total	3248	276.01

DEVIATION

1. Empowered Committee Meeting with Chief Secretary.
2. Targets over achieved.
3. Under Ridge Model Single ridge/ on boundary
4. Protection of Forests Strips. Ballies replaced by Cement pole
5. Alkali Land plantation in community Land.

A close-up photograph of several purple flowers with five petals and a yellow-green center, growing in a wooden planter. The background is a soft-focus green. The word "THANKS" is overlaid in large, bold, orange-to-yellow gradient letters with a white outline.

THANKS

1 2:16 PM