

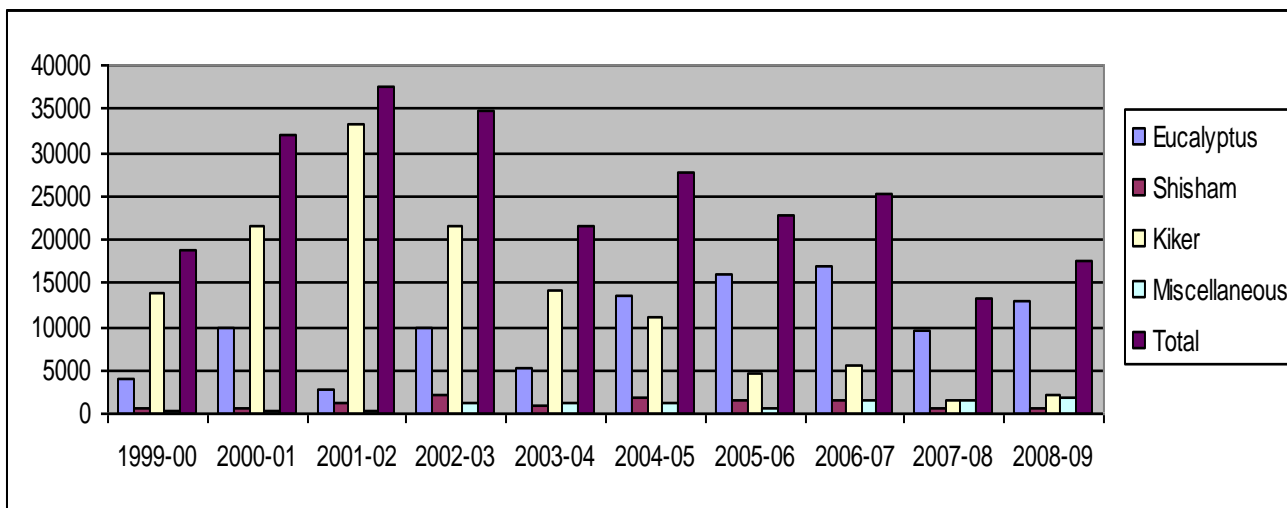
**PRODUCTION DIVISION  
KURUKSHETRA**

**WELCOME**

**M.P. SHARMA  
DIVISIONAL FOREST OFFICER**

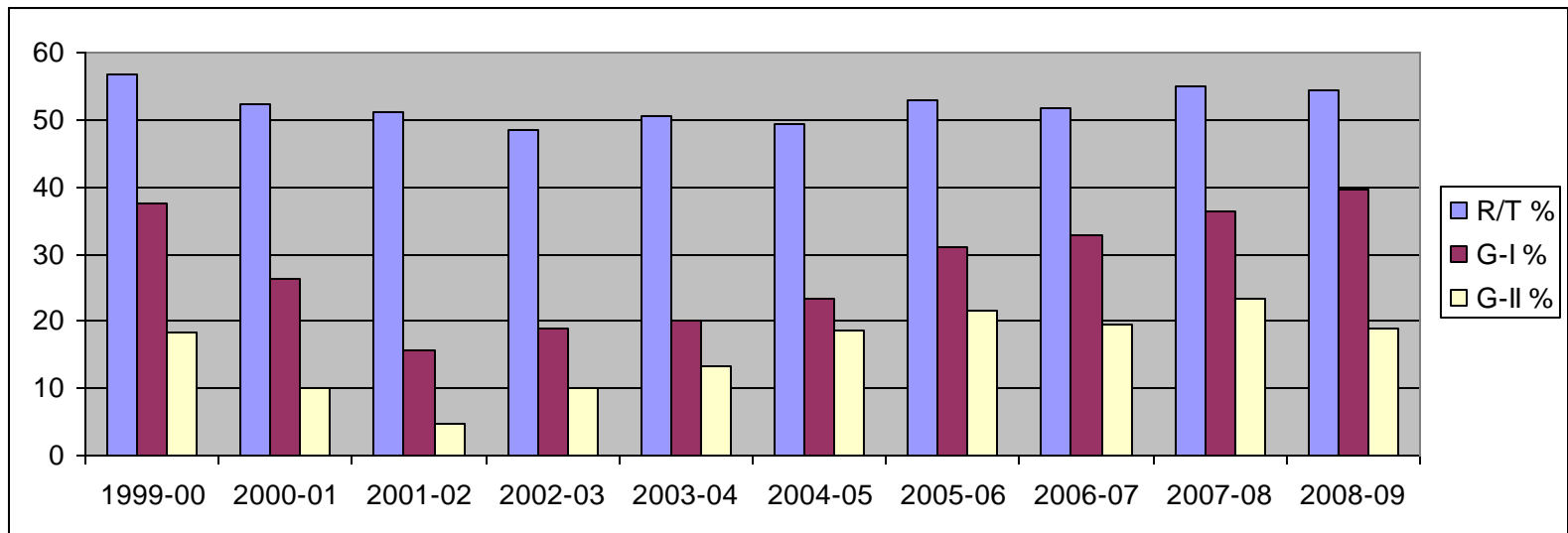
## Year Wise Felling of Production Division, Kurukshetra (Last Ten Year)

Year	Eucalyptus	Shisham	Kiker	Miscellaneous	Total
1999-00	3852	612	13899	411	18774
2000-01	9714	678	21498	207	32097
2001-02	2726	1081	33212	412	37431
2002-03	9701	2172	21456	1359	34688
2003-04	5312	895	14096	1216	21519
2004-05	13652	1797	11107	1132	27688
2005-06	15913	1418	4720	749	22800
2006-07	16774	1418	5495	1461	25148
2007-08	9655	631	1470	1581	13337
2008-09	12822	651	2274	1876	17623



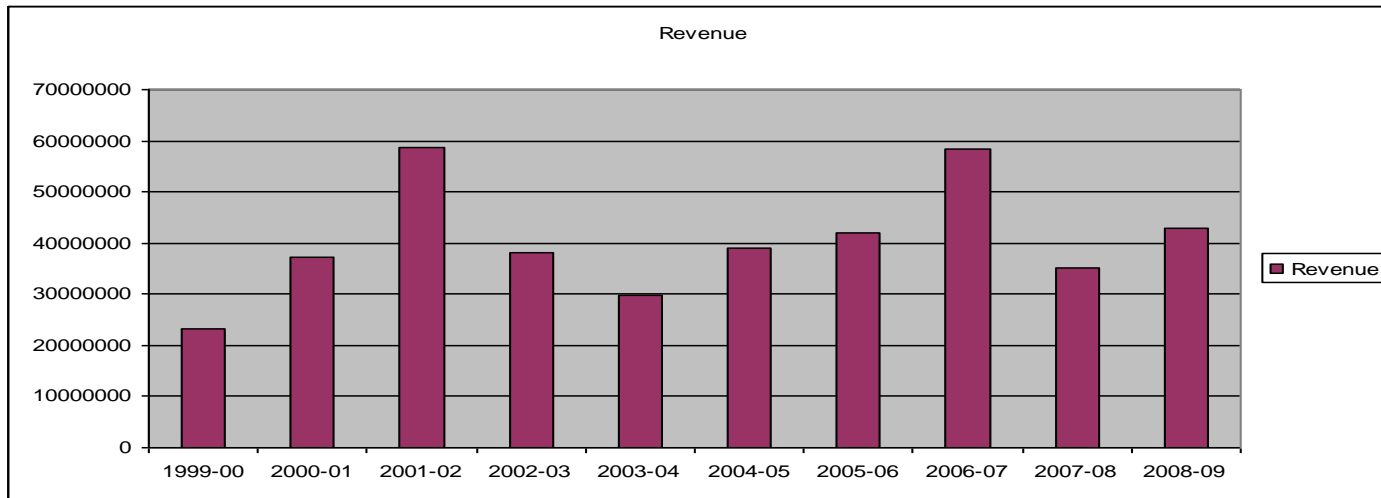
### Conversion of Production Division, Kurukshetra (Last Ten Years)

Year	R/T %	G-I %	G-II %
1999-00	57	38	18
2000-01	52	26	10
2001-02	51	16	5
2002-03	48	19	10
2003-04	50	20	13
2004-05	49	23	19
2005-06	53	31	22
2006-07	52	33	19
2007-08	55	36	23
2008-09	54	40	19



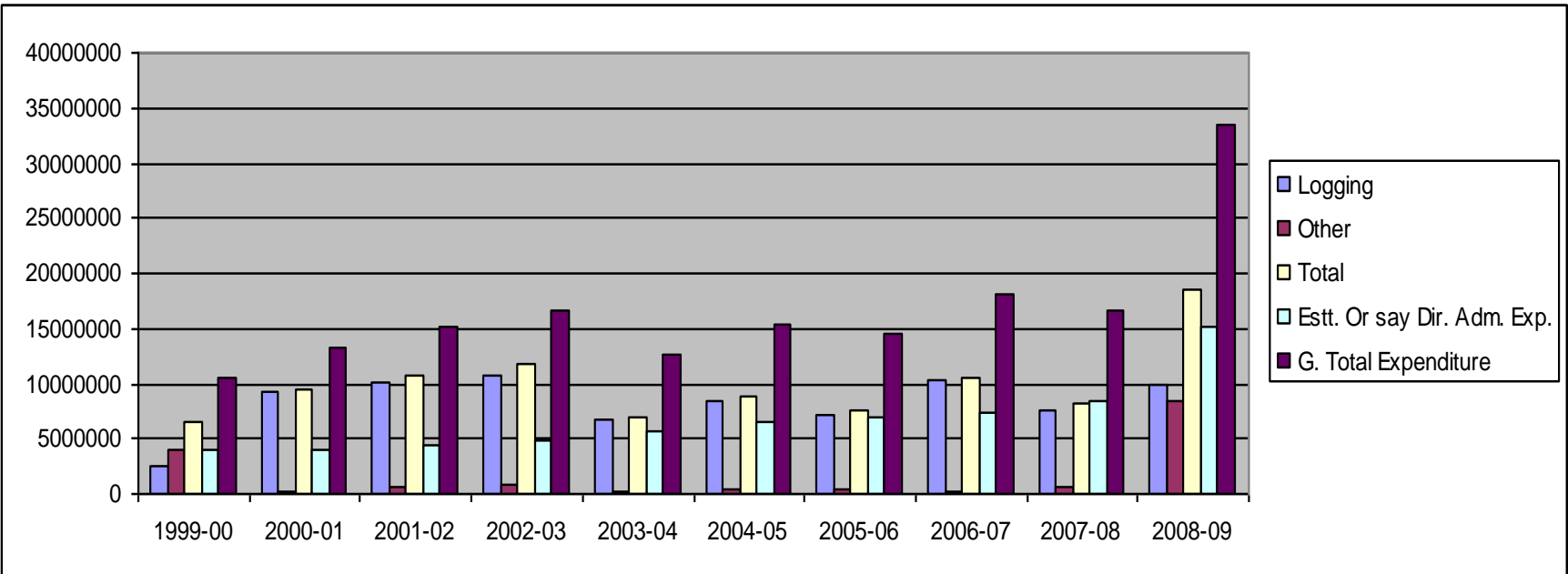
## Revenue of Production Division (Last Ten Year)

Year	Revenue
1999-00	23111759
2000-01	37380193
2001-02	58545968
2002-03	38152534
2003-04	29906245
2004-05	38964445
2005-06	42016019
2006-07	58479185
2007-08	35111290
2008-09	42954010



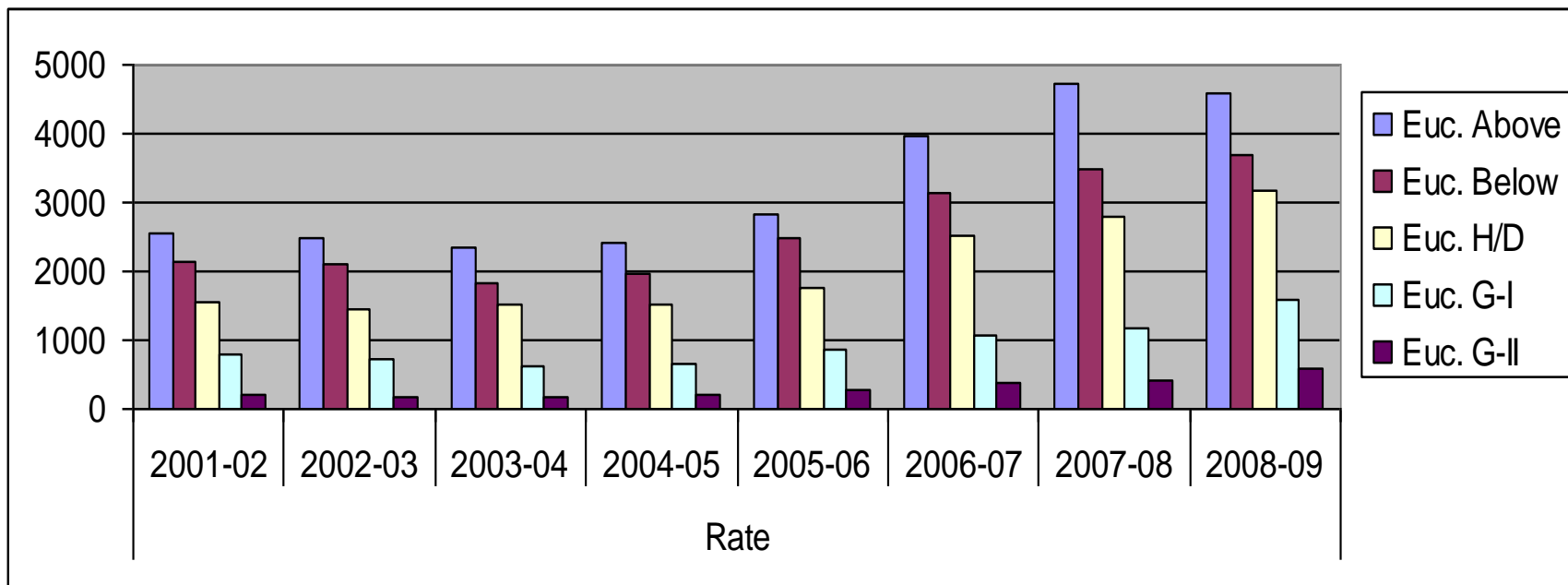
## LOGGING & OTHER EXPENDITURE

Year	Logging	Other	Total	Estt. Or say Dir Adm. Exp.	G. Total Expenditure
<b>1999-00</b>	<b>2571170</b>	<b>3971741</b>	<b>6542911</b>	<b>4042334</b>	<b>10585245</b>
<b>2000-01</b>	<b>9175000</b>	<b>223448</b>	<b>9398448</b>	<b>3917795</b>	<b>13316243</b>
<b>2001-02</b>	<b>10200002</b>	<b>531482</b>	<b>10731484</b>	<b>4427277</b>	<b>15158761</b>
<b>2002-03</b>	<b>10825000</b>	<b>908528</b>	<b>11733528</b>	<b>4946453</b>	<b>16679981</b>
<b>2003-04</b>	<b>6749998</b>	<b>188813</b>	<b>6938811</b>	<b>5786459</b>	<b>12725270</b>
<b>2004-05</b>	<b>8500001</b>	<b>375578</b>	<b>8875579</b>	<b>6491772</b>	<b>15367351</b>
<b>2005-06</b>	<b>7249990</b>	<b>355458</b>	<b>7605448</b>	<b>6914745</b>	<b>14520193</b>
<b>2006-07</b>	<b>10300005</b>	<b>293999</b>	<b>10594004</b>	<b>7463744</b>	<b>18057748</b>
<b>2007-08</b>	<b>7500000</b>	<b>656684</b>	<b>8156684</b>	<b>8380357</b>	<b>16537041</b>
<b>2008-09</b>	<b>9999999</b>	<b>8454570</b>	<b>18454569</b>	<b>15062763</b>	<b>33517332</b>



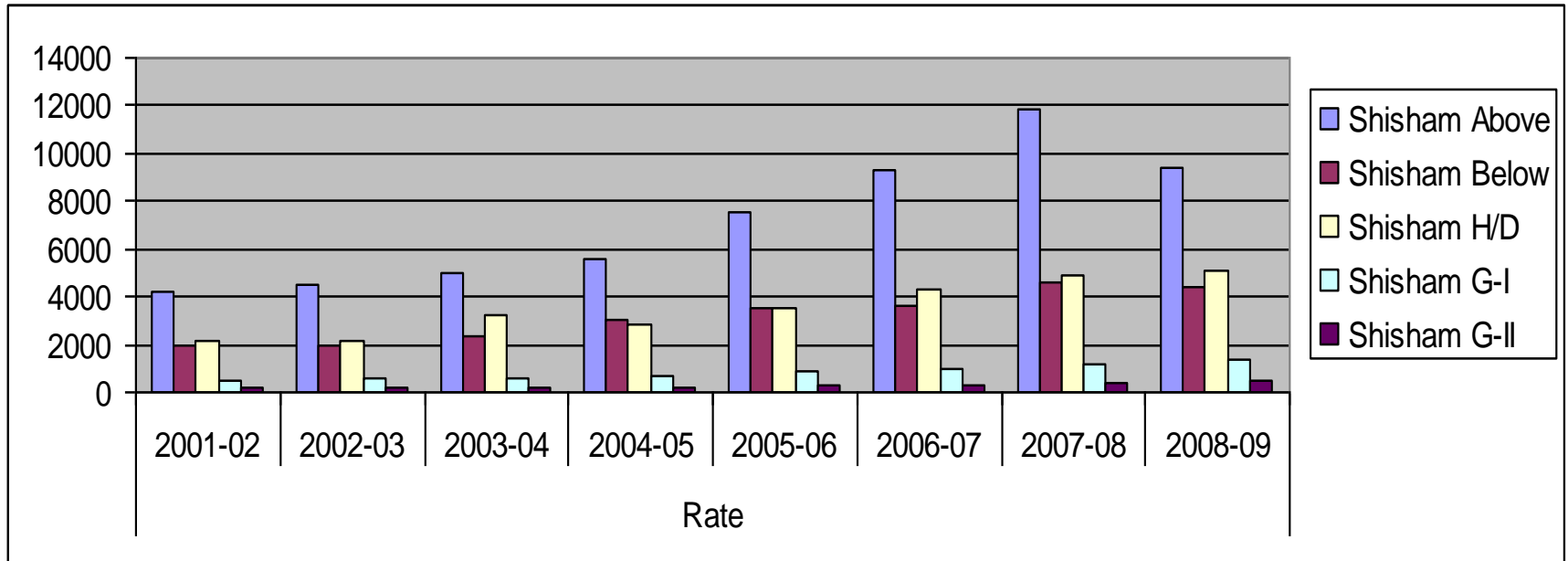
### Average Rate for the year 2001-02 to 2008-09

Sr. No.	Euc.	Grade	Rate							
			2001-02	2002-03	2003-04	2004-05	2005-06	2006-07	2007-08	2008-09
1	Euc.	Above	2539	2498	2332	2411	2818	3960	4733	4583
		Below	2124	2094	1844	1965	2475	3146	3489	3690
		H/D	1569	1450	1514	1532	1760	2505	2800	3188
		G-I	786	711	610	664	869	1063	1175	1570
		G-II	219	184	176	200	274	377	421	584



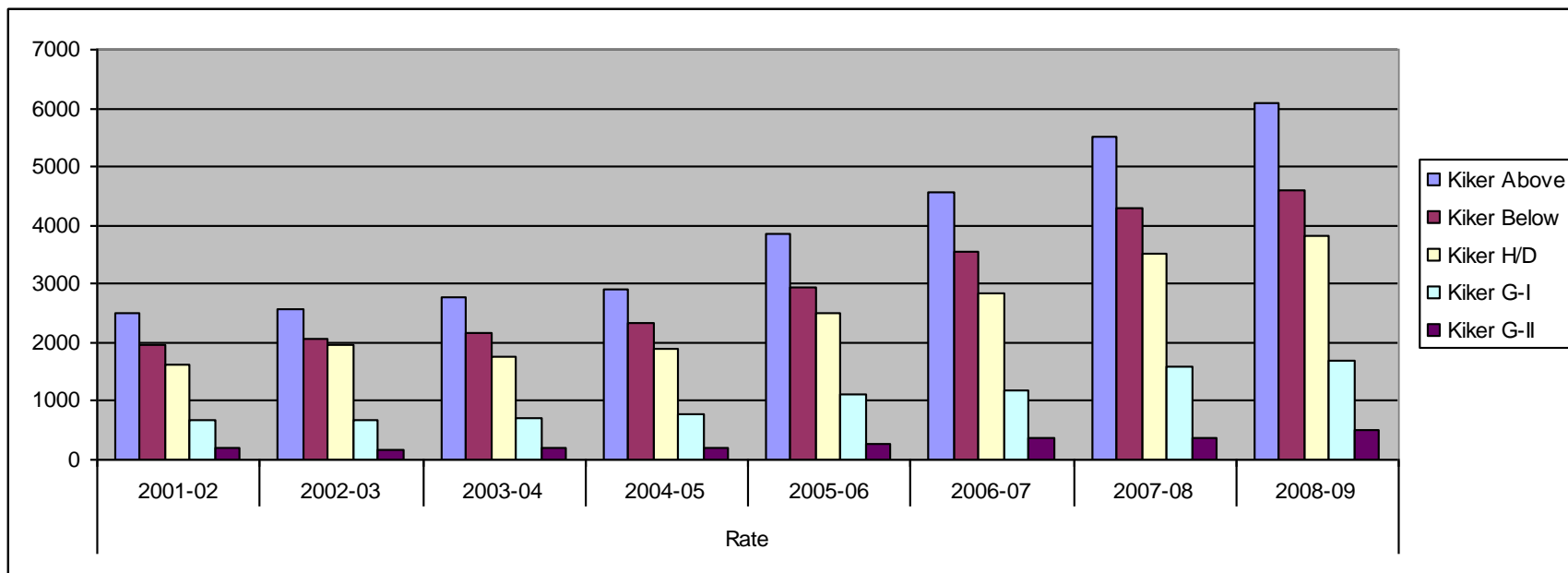
### Average Rate for the year 2001-02 to 2008-09

S. No	Species	Grade	Rate							
			2001-02	2002-03	2003-04	2004-05	2005-06	2006-07	2007-08	2008-09
1	Shisham	Above	4258	4522	5026	5546	7581	9300	11862	9369
		Below	1996	1993	2370	3010	3541	3578	4619	4405
		H/D	2111	2202	3188	2833	3527	4318	4917	5095
		G-I	528	553	552	646	865	960	1181	1387
		G-II	170	165	155	197	261	324	416	501



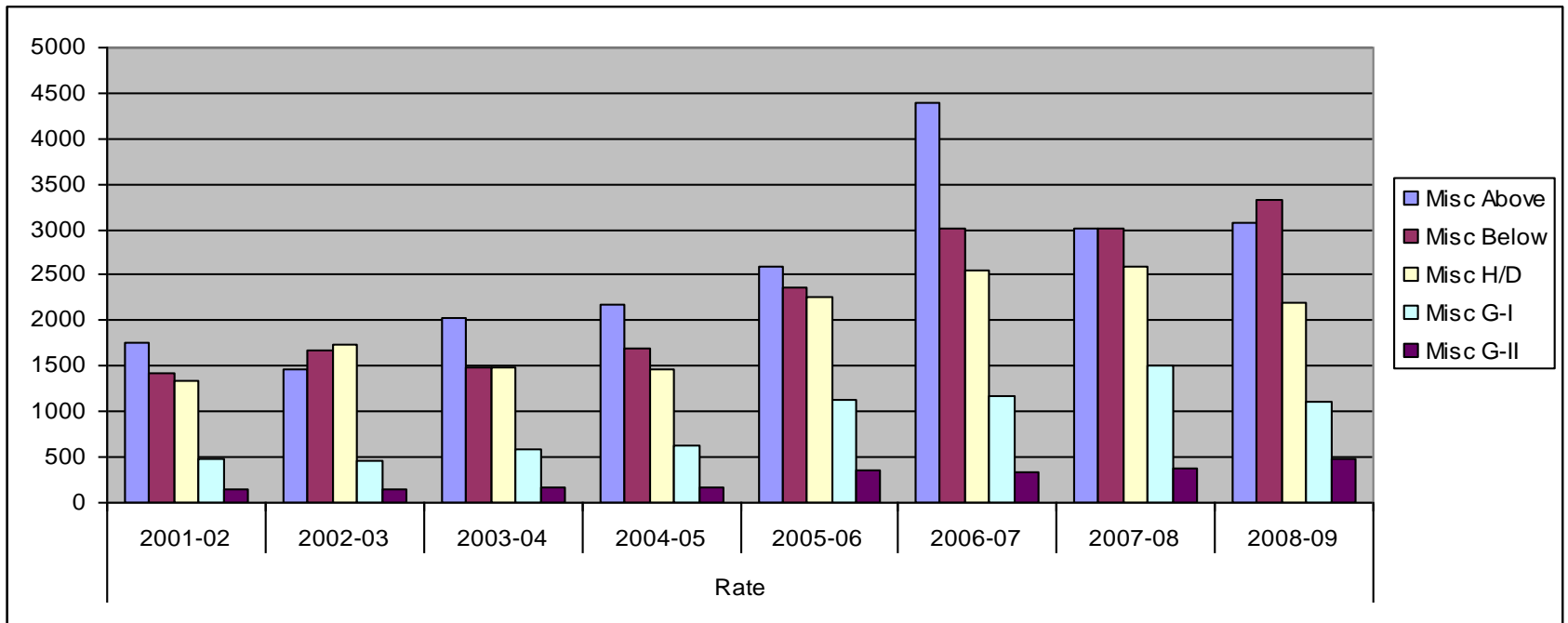
### Average Rate for the year 2001-02 to 2008-09

S. No	Species	Grade	Rate							
			2001-02	2002-03	2003-04	2004-05	2005-06	2006-07	2007-08	2008-09
1	Kiker	Above	2503	2587	2781	2895	3841	4567	5511	6101
		Below	1955	2057	2169	2343	2945	3566	4288	4587
		H/D	1627	1965	1755	1900	2489	2852	3529	3821
		G-I	687	666	705	792	1113	1196	1596	1704
		G-II	189	178	187	209	269	382	383	519



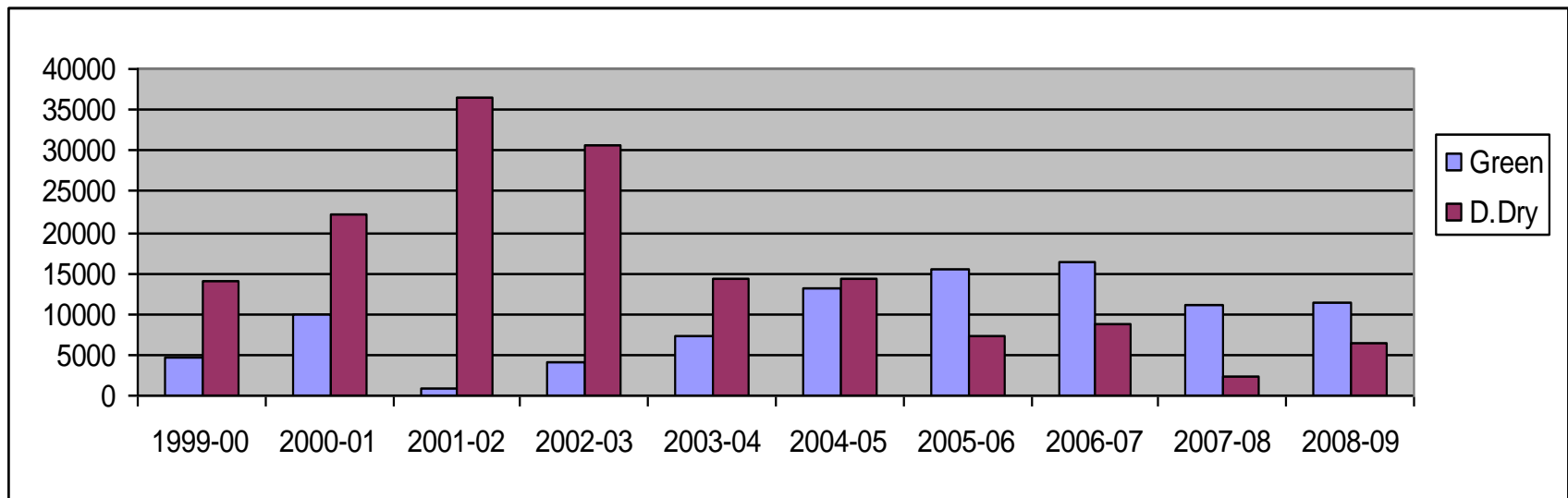
### Average Rate for the year 2001-02 to 2008-09

Sr. No	Species	Grade	Rate							
			2001-02	2002-03	2003-04	2004-05	2005-06	2006-07	2007-08	2008-09
1	Misc	Above	1762	1465	2031	2176	2588	4386	3020	3085
		Below	1431	1681	1486	1689	2367	3016	3006	3334
		H/D	1345	1730	1482	1474	2264	2557	2595	2198
		G-I	479	455	576	624	1132	1176	1513	1114
		G-II	142	146	160	176	360	344	386	489



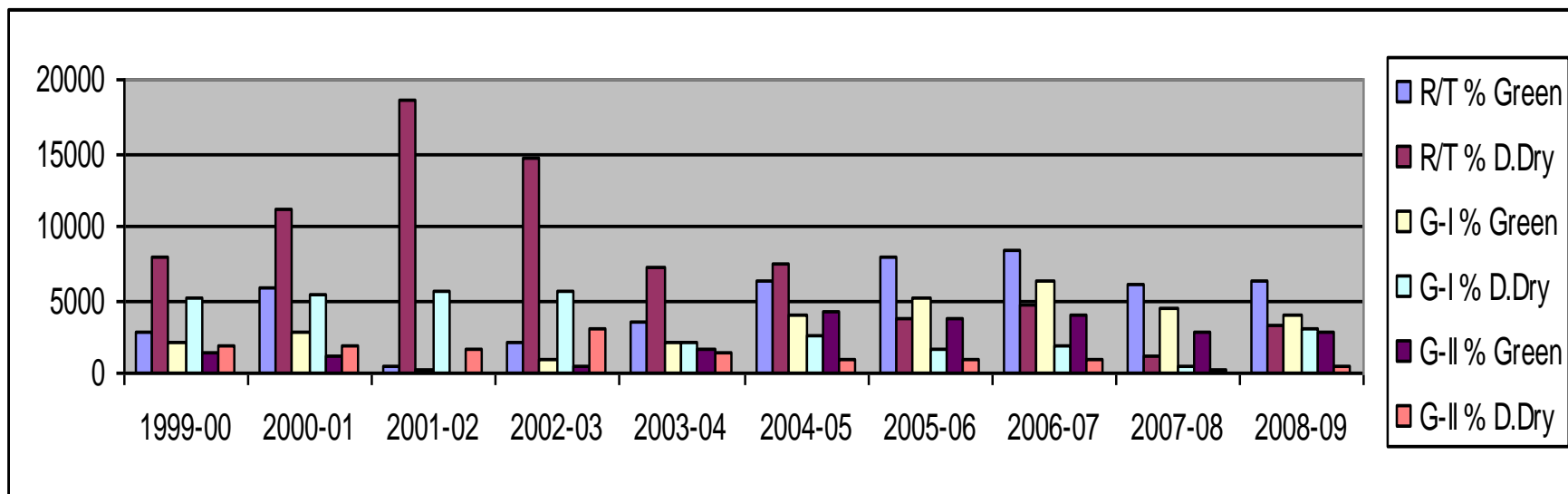
### Year Wise Green D.Dry Felling of Production Division, Kurukshetra (Last Ten Year)

Year	Green	D.Dry
1999-00	4643	14131
2000-01	9903	22194
2001-02	969	36462
2002-03	4082	30606
2003-04	7239	14280
2004-05	13280	14408
2005-06	15530	7270
2006-07	16460	8688
2007-08	10981	2356
2008-09	11297	6326



### Conversion of Green & D.Dry of Production Division, Kurukshetra (Last Ten Years)

Year	R/T %		G-I %		G-II %	
	Green	D.Dry	Green	D.Dry	Green	D.Dry
1999-00	2682	7955	2018	5056	1499	1916
2000-01	5767	11069	2902	5399	1278	1948
2001-02	498	18644	211	5687	74	1691
2002-03	2056	14750	954	5570	531	3006
2003-04	3525	7325	2186	2170	1543	1324
2004-05	6237	7421	3975	2498	4095	1039
2005-06	7909	3784	5085	1666	3811	938
2006-07	8355	4641	6276	1954	4004	895
2007-08	6055	1268	4318	547	2873	222
2008-09	6240	3337	4051	2943	2785	553



**THANK YOU**